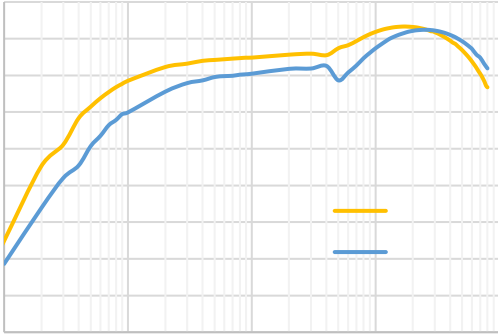


SCTC

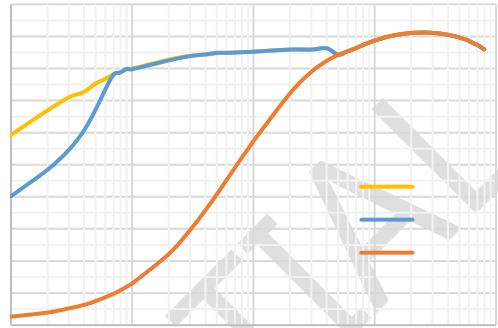
SCT CONFIDENTIAL

SCT CON

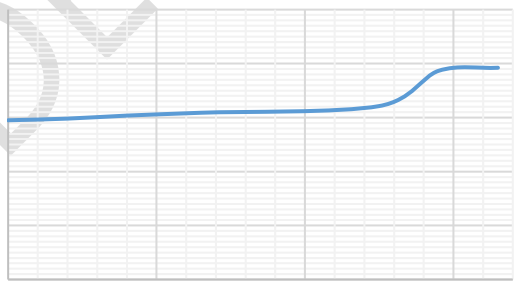
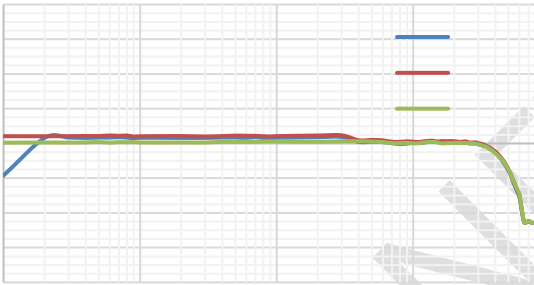
&



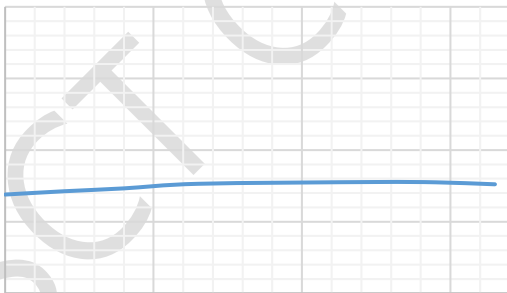
&



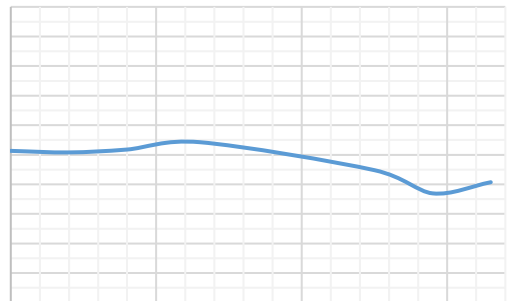
&



%



&



!

%

SCTC

SCT CON

SCT CONFIDENTIAL



(

%

%

%

%

(% % % & % % % & % & % & % & % (% & %%

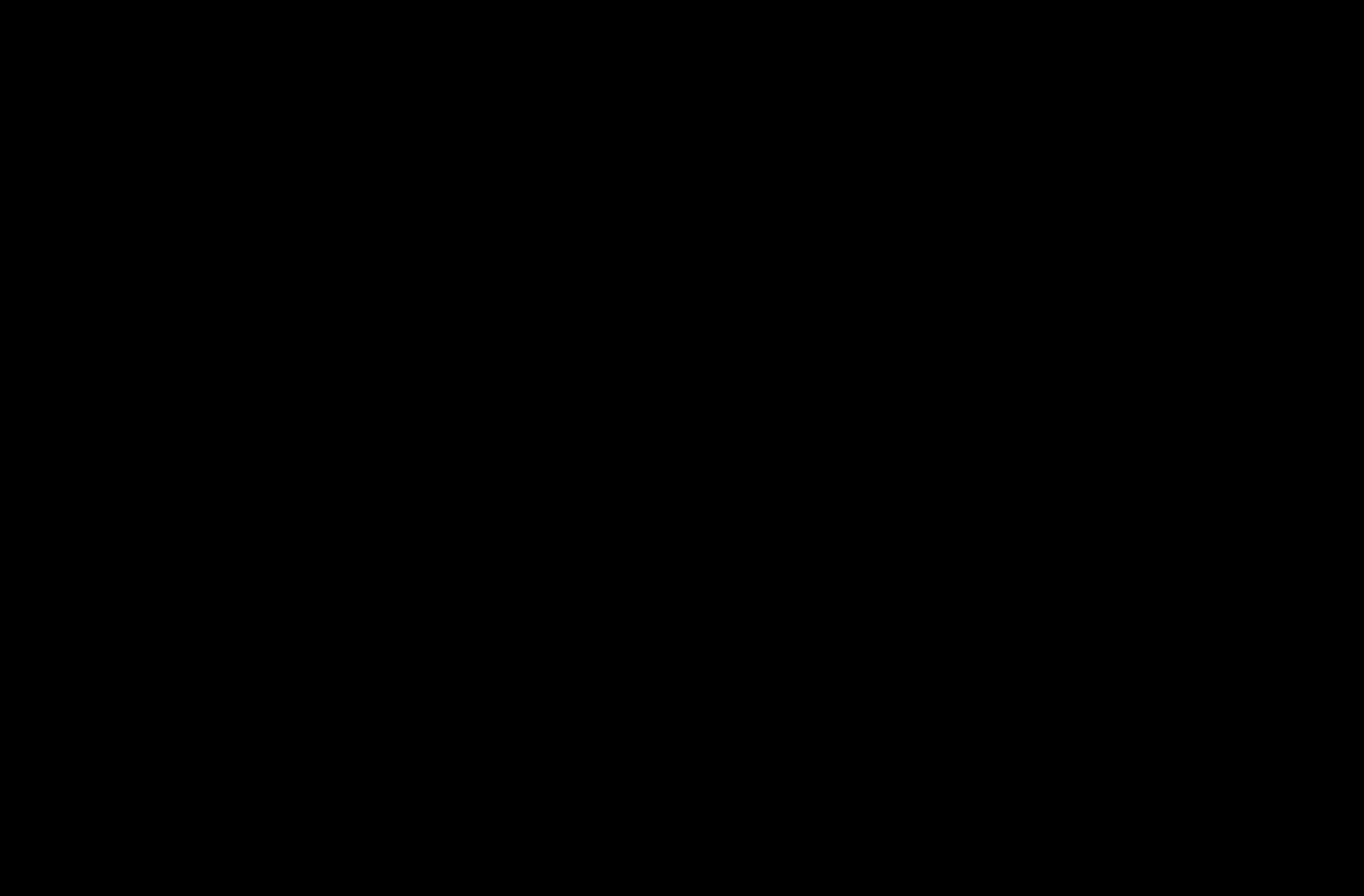
&

SCT CONFIDENTIAL





—



—

%

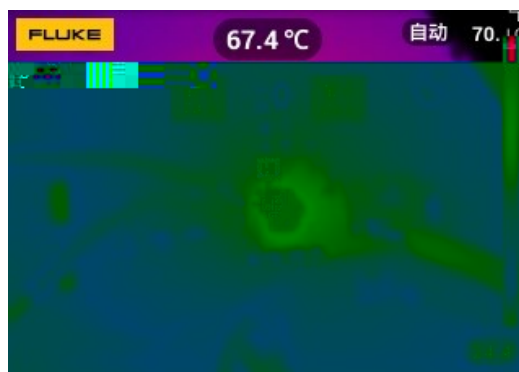
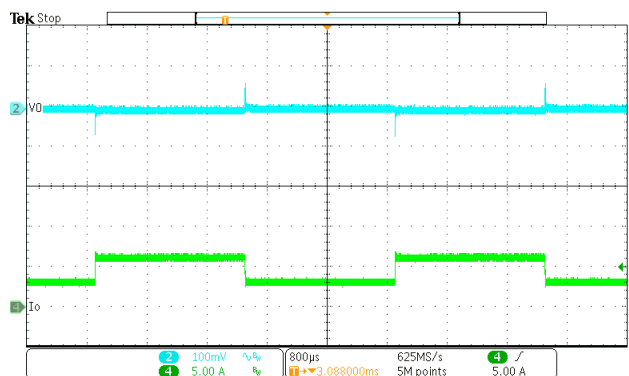
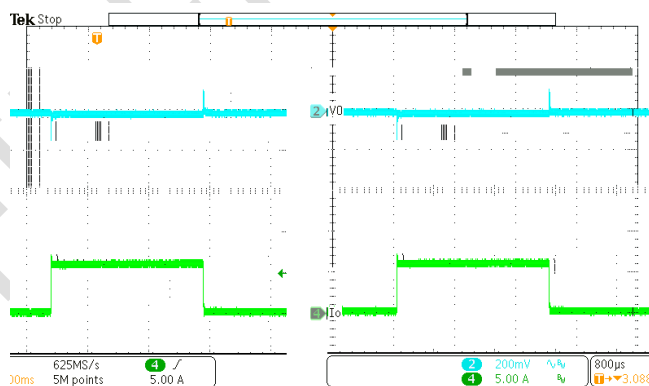
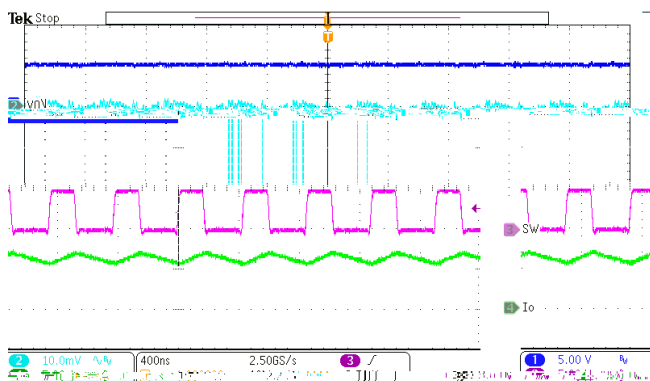
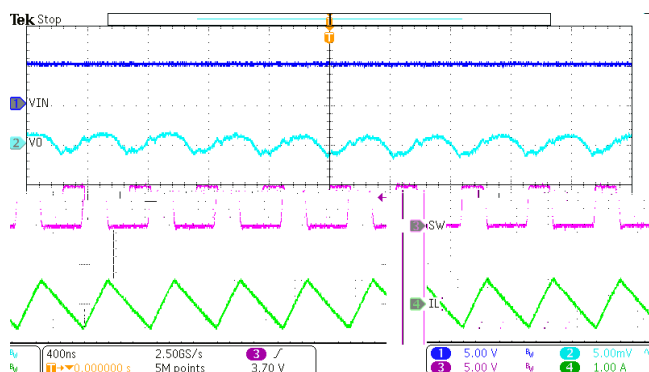
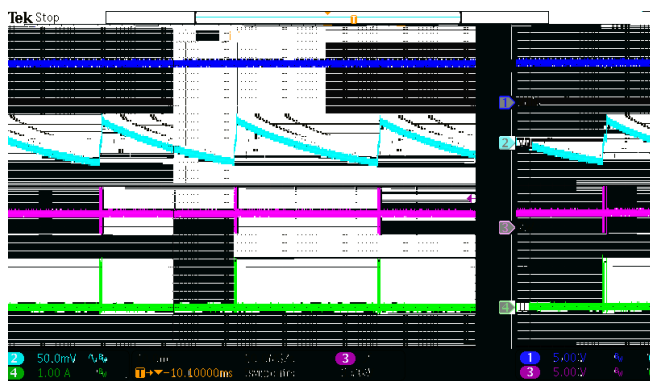


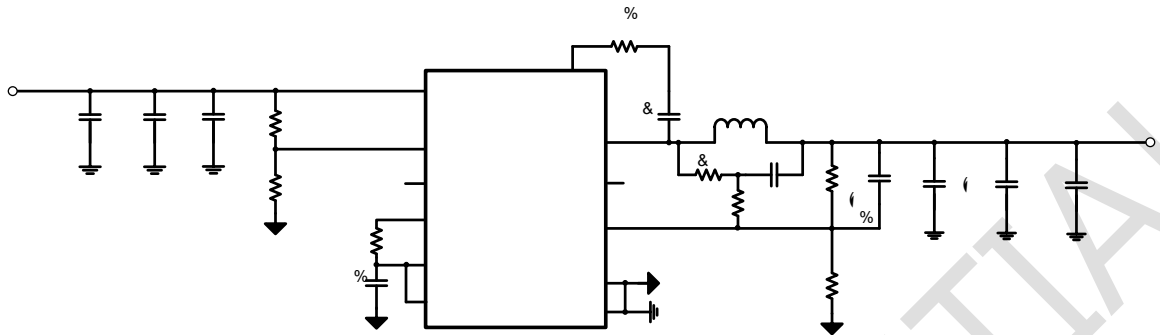
&

SCT CONFIDENTIAL

&

&





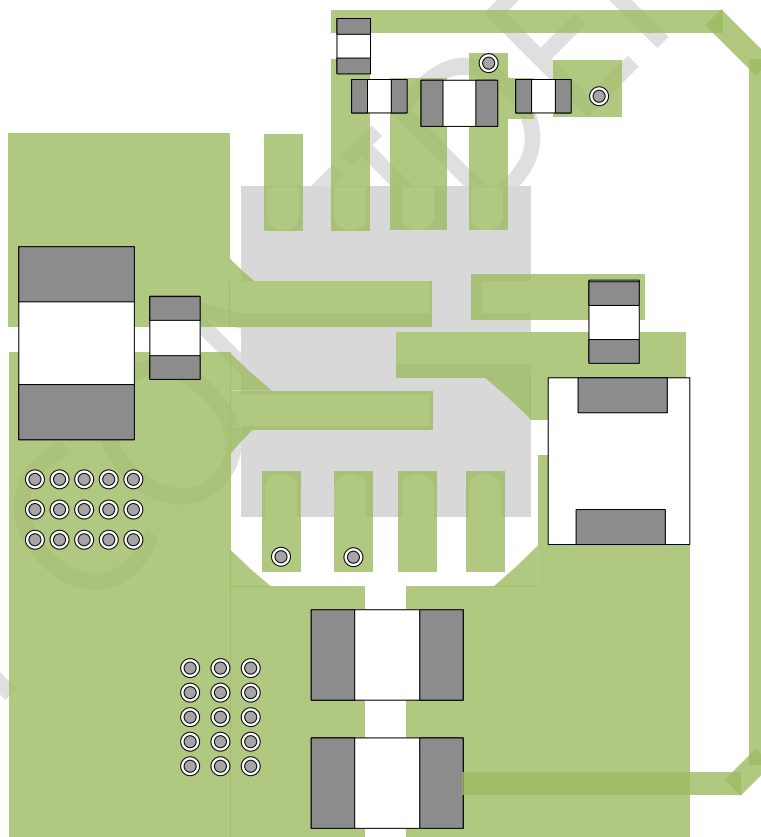
	&

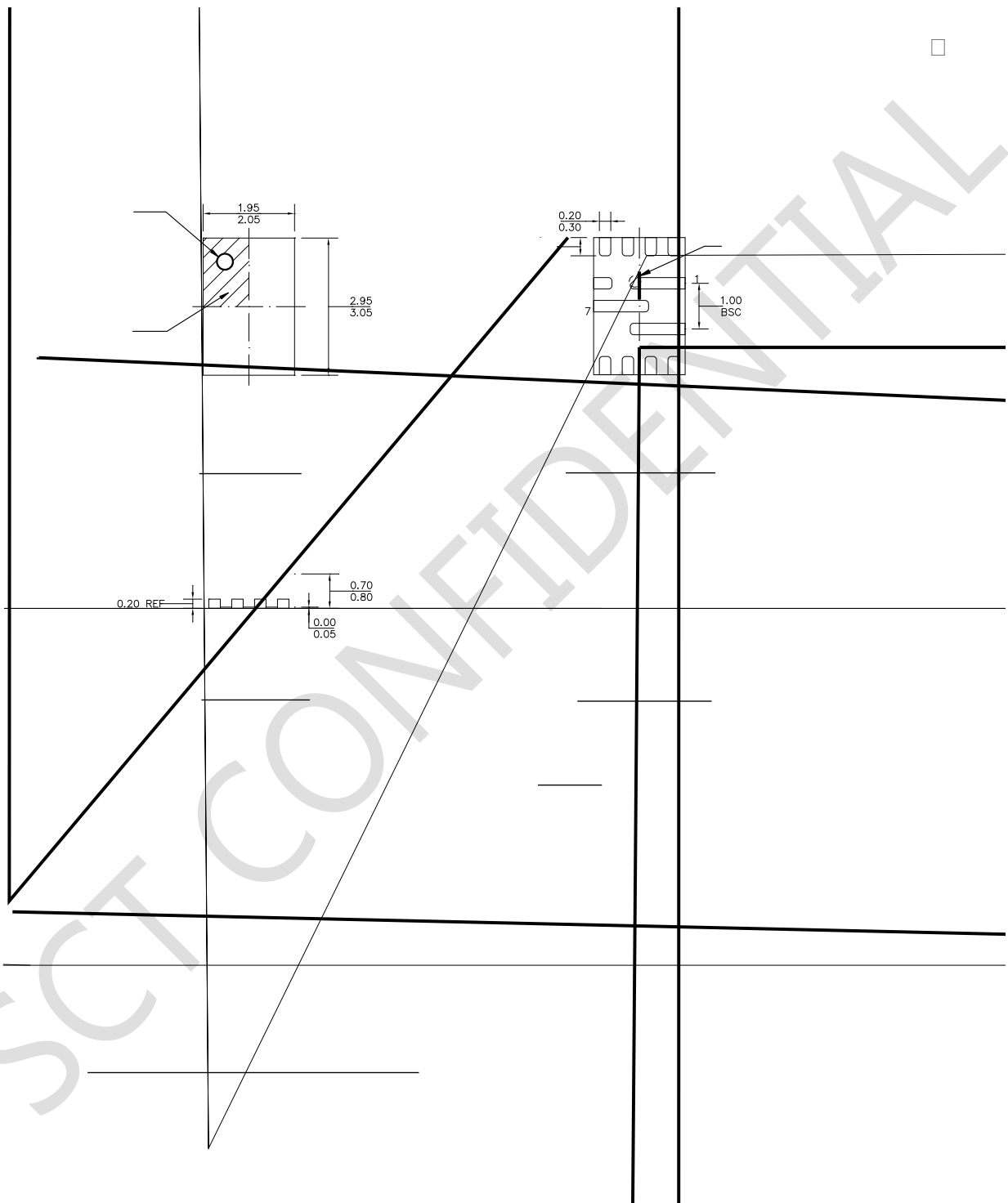
SCT CON

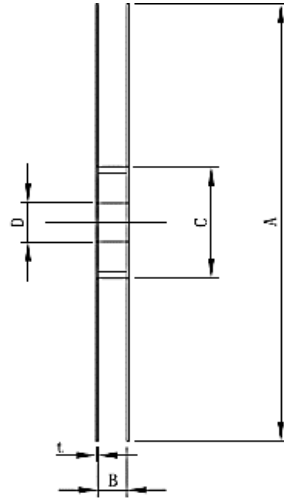
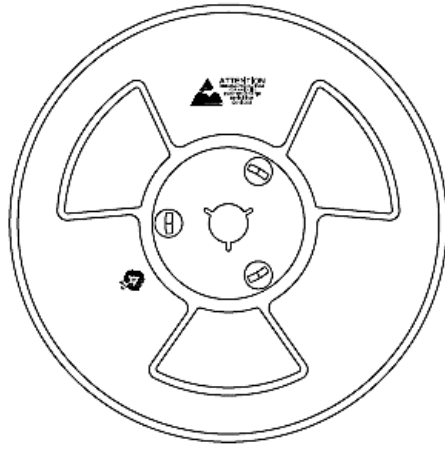
The bottom layer is a large ground plane connected to the ground plane on top layer by vias it is recommended 8mil diameter drill holes of thermal vias, but a smaller via offers less risk of solder volume loss. On applications where solder volume loss through the vias is of concern, plugging or tenting can be used to achieve a repeatable process.

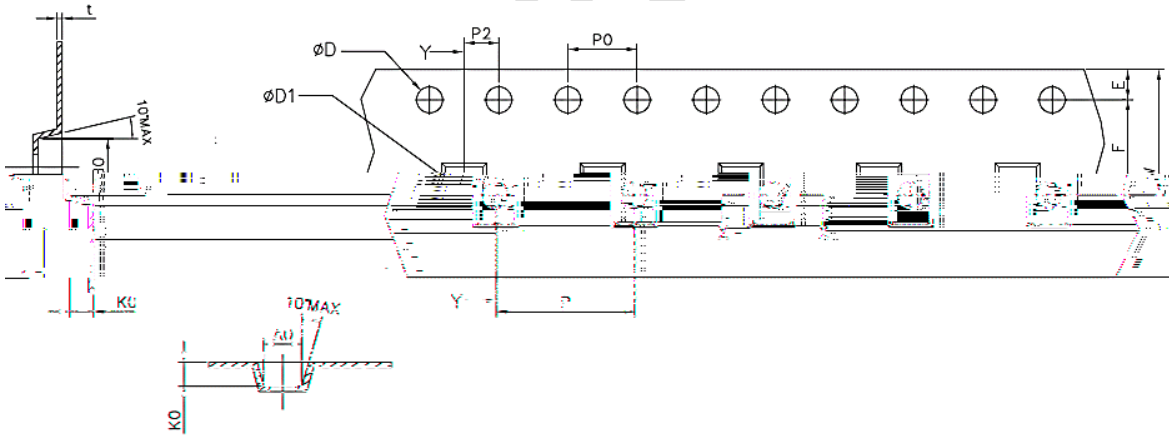
%

&









	&	∩&	&
	& %&	& &	& &&
	&	&	&
		&	
		&	∩&
		%	%
			%
	%	%	%
		&	∩